

**STEP 6:** Once the food has been sliced or shredded, release the speed button and wait for the disc to stop rotating before removing the chopping bowl lid.

**STEP 7:** To remove the chopping bowl from the main unit, twist the chopping bowl in an anticlockwise direction and lift away from the main unit.

**STEP 8:** Remove the chopping bowl lid by twisting in an anticlockwise direction and carefully lift the disc attachment upwards to remove.

## Troubleshooting

Problem	Possible cause	Solution
The food processor will not operate.	The food processor is not connected to the mains power supply.	Plug in and switch on the food processor at the mains power supply.
	The chopping bowl is not correctly attached to the main unit.	Attach the chopping bowl to the main unit by twisting clockwise until it clicks into place.
	The guides on the chopping bowl lid are not correctly aligned with the chopping bowl.	Secure the chopping bowl lid by placing it on top, aligning the guides and then twisting it in until it locks.
The blades will not move when in contact with ingredients.	The ingredients are hard vegetables, such as potato, carrot and turnip, making it difficult for the food processor to blend.	Only blend ingredients such as cooked vegetables or soft fruit.

## Storage

Reassemble the food processor.

Check that the food processor is cool, clean and dry before storing in a cool, dry place.

Never wrap the cord tightly around the food processor; wrap it loosely to avoid causing damage.

## Specifications

Product code: EK6520

Input: 220–240 V ~ 50–60 Hz

Output: 300 W



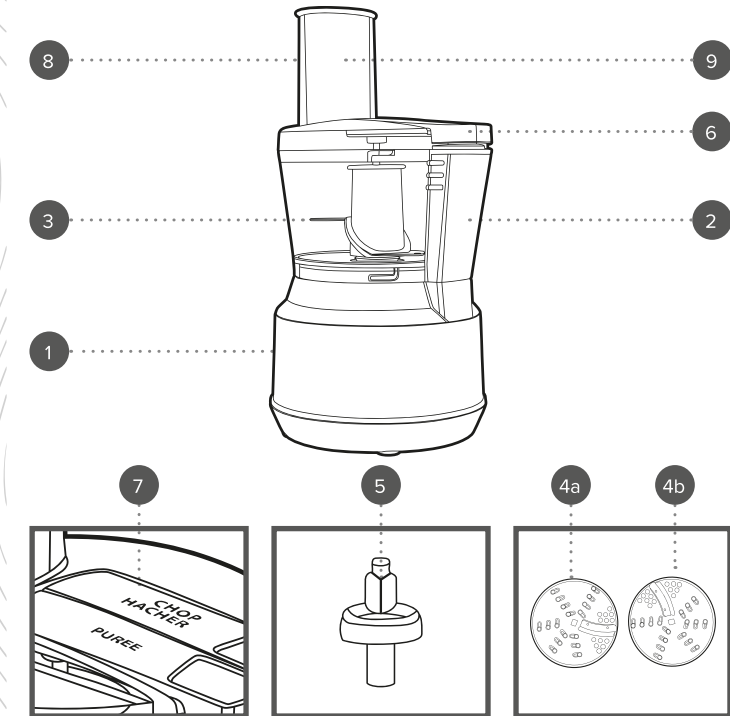
### Disposal of Waste Batteries and Electrical and Electronic Equipment



This symbol on the product, its batteries or its packaging means that this product and any batteries it contains must not be disposed of with household waste. Instead, it is the user's responsibility to hand this over to an applicable collection point for the recycling of batteries and electrical and electronic equipment. This separate collection and recycling will help to conserve natural resources and prevent potential negative consequences for human health and the environment due to the possible presence of hazardous substances in batteries and electrical and electronic equipment, which could be caused by inappropriate disposal. Some retailers provide take-back services which allow the user to return exhausted equipment for appropriate disposal. **It is the user's responsibility to delete any data on electrical and electronic equipment prior to disposal.** For more information about where to drop batteries, electrical and electronic waste off, please contact the local city/municipality office, household waste disposal service, or the retailer.

# User manual

Food processor



1. Food processor main unit
2. Chopping bowl
3. Chopping blade
4. Disc attachment
  - a. Grating disc
  - b. Slicing disc
5. Disc holding shaft
6. Chopping bowl lid
7. 2 speed buttons
8. Feeding chute
9. Food pusher

Manufactured by:  
Ultimate Products UK Ltd.,  
Victoria Street, Manchester OL9 0DD. **UK.**  
Ultimate Products Europe Ltd.,  
19 Baggot Street Lower, Dublin D02 X658. **ROI.**

**MADE IN CHINA.**

CD011124/MD000000/V1

## SAFETY INSTRUCTIONS

- When using electrical appliances, basic safety precautions should always be followed.
- Check that the voltage indicated on the rating plate corresponds with that of the local network before connecting the appliance to the mains power supply.
- This appliance can be used by children aged from 8 years and above and persons with reduced physical, sensory or mental capabilities and knowledge, if they have been supervised/instructed and understand the hazards involved.
- Children shall not play with the appliance.
- Children should not perform cleaning or user maintenance, unless they are older than 8 and supervised.
- This appliance is not a toy.
- If the power supply cord, plug or any part of the appliance is malfunctioning or if it has been dropped or damaged, cease using the product immediately to avoid potential injury.
- This appliance contains no user serviceable parts, only a qualified electrician should carry out repairs. Improper repairs may place the user at risk of harm.
- Keep the appliance and its power supply cord out of the reach of children.
- Keep the appliance out of the reach of children when it is switched on or cooling down.
- Keep the appliance and its power supply cord away from heat or sharp edges that could cause damage.
- Keep the power supply cord away from any parts of the appliance that may become hot during use.
- Keep the appliance away from other heat emitting appliances.
- Do not allow the power supply cord to hang over worktops, touch hot surfaces or become twisted.
- Do not immerse the electrical components of this appliance in water or any other liquid.
- Do not operate the appliance with wet hands or if any connections are wet.
- If this appliance falls or accidentally becomes immersed in water, unplug it from the wall outlet immediately. Do not reach into the water.
- Do not leave the appliance unattended whilst connected to the mains power supply.
- Do not remove the appliance from the mains power supply by pulling the cord; switch it off and remove the plug by hand.
- Do not pull or carry the appliance by its power supply cord.
- Do not use the appliance for anything other than its intended use.
- Do not use any accessories other than those supplied.
- Do not use any damaged accessories.
- Do not use this appliance outdoors.
- Do not store the appliance in direct sunlight or in high humidity conditions.
- Do not move the appliance whilst it is in use.

- Do not touch any moving parts on this appliance during use, as this could cause injury.
- Do not touch any sections of the appliance that may become hot during use, as this could cause injury.
- Always unplug the appliance after use and ensure it has cooled fully before any cleaning, user maintenance or storing away.
- Always use the appliance on a stable, heat-resistant surface, at a height that is comfortable for the user.
- Use of an extension cord with the appliance is not recommended.
- This appliance should not be operated by means of an external timer or separate remote control system.
- This appliance is intended for domestic use only. It should not be used for commercial purposes.



**CAUTION:** Keep hands, fingers, hair and any loose clothing away from the rotating tools of the appliance.



**WARNING:** Do not touch sharp blades.

### Dos and don'ts

#### DO:

Be careful if hot liquid is poured into the food processor, as it can be ejected out of the food processor due to sudden steaming.

Switch off the food processor and disconnect it from the mains power supply before changing or fitting attachments.

Switch off the food processor and disconnect it from the mains power before attempting to remove any food from the chopping bowl and before cleaning.

#### DON'T:

Dry blend ingredients; always add a small amount of liquid.

Use attachments or cutting/rotating blades if they are loose, damaged or broken. Use the chopping bowl if it is cracked or broken.

Operate the food processor when the chopping bowl is empty, as this will cause damage.

### Care and maintenance

**STEP 1:** Switch off and unplug the food processor from the mains power supply before performing any cleaning or user maintenance.

**STEP 2:** Wipe the main unit with a soft, damp cloth and allow to dry thoroughly.

**STEP 3:** Wash all of the accessories in warm, soapy water, then rinse and dry thoroughly.

Do not use harsh or abrasive detergents or scourers to clean the food processor, as this could cause damage.

Never touch the blades; the attachments should be washed using a brush and dried carefully.



**NOTE:** The food processor should be cleaned after every use. The main unit and all accessories are not safe for dishwasher use.



**WARNING:** Handle the attachments with care, as the blades and the slicing and grating disc attachment are sharp. Exercise caution when attaching, removing, cleaning or storing the attachments.

## Instructions for use

### Before first use

Before connecting to the mains power supply, clean the food processor following the instructions in the section entitled '**Care and maintenance**'.



**NOTE:** When using the food processor for the first time, a slight odour may be emitted. This is normal and will soon subside. Allow for sufficient ventilation around the food processor.

### Using the food processor

All attachments must be securely fitted before use; do not attempt to remove them until the attachment has stopped moving.



**WARNING:** Maximum operation time is approx. 30 seconds. Allow to cool for approx. 2 minutes before using the food processor again. When placing food into the chopping bowl, take care not to overfill it in order to avoid spillages.

### With the chopping attachments

The chopping attachments are ideal for slicing or dicing fruit and vegetables.

**STEP 1:** Before connecting the food processor to the mains power supply, attach the chopping bowl to the main unit by twisting it a clockwise direction until it clicks into place.

**STEP 2:** Carefully attach the chopping blade onto the spindle on the inside of the chopping bowl and push down until it clicks into place.

**STEP 3:** Place the ingredients to be chopped into the chopping bowl. Secure the chopping bowl lid by placing it on top, aligning the guides and then twisting it in until it locks. Ensure the food pusher is placed in the feeding chute before use.

**STEP 4:** Plug in and switch on the food processor at the mains power supply.

**STEP 5:** Holding the chopping bowl steady, press and hold the desired speed button on the chopping bowl lid.

**STEP 6:** Once the food has been chopped to the required size, release the speed button and wait for the chopping blade to stop rotating before removing the chopping bowl lid.

**STEP 7:** Any extra food may be added to the chopped ingredients at this point by removing the food pusher and placing food down the feeding chute. Make sure to replace the food pusher before repeating the chopping process.

**STEP 8:** To remove the chopping bowl from the main unit, twist the chopping bowl in an anticlockwise direction and lift away from the main unit.

### With the slicer and grating attachment

The slicer attachment is ideal for slicing fruit and vegetables.

The grating attachment is ideal for grating cheese or vegetables, such as carrots.

**STEP 1:** Before connecting the food processor to the mains power supply, ensure the chopping blade attachment has been carefully removed and attach the disc holding shaft by aligning onto the spindle on the inside of the chopping bowl.

**STEP 2:** Place the slicing and grating disc on top of the disc holding shaft so that the disc lies flat with the desired side facing upwards.

**STEP 3:** Secure the chopping bowl lid by placing it on top, aligning the guides and then twisting it in a clockwise direction until it locks. Remove the food pusher from feeding chute before use.

**STEP 4:** Plug in and switch on the food processor at the mains power supply.

**STEP 5:** Holding the chopping bowl steady, place the food in the feeding chute and press and hold the desired speed button on the chopping bowl lid. Only use the food pusher to press the food into the unit.